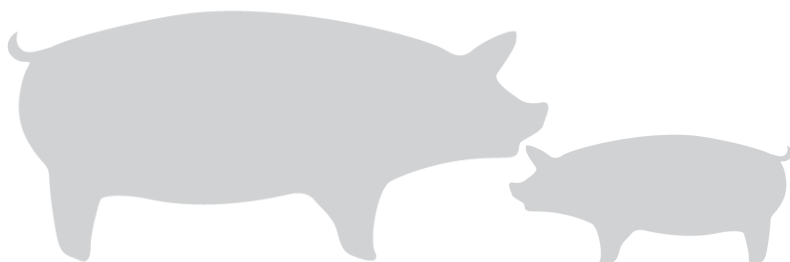


Live hog prices dressed weight

Weight interval	DKK / Kg	
	06.06.2016 – 12.06.2016	30.05.2016 – 05.06.2016
	(Week 23)	(Week 22)
50,0 - 59,9 Kg	6,00 - 7,00	5,70 - 6,70
60,0 - 69,9 Kg	8,00 - 9,85	7,70 - 9,55
70,0 - 94,9 Kg	10,00	9,70
95,0 - 95,9 Kg	9,80	9,50
96,0 - 96,9 Kg	9,40	9,10
97,0 - 97,9 Kg	9,10	8,80
98,0 - 99,9 Kg	8,80	8,50
100,0 - 109,9 Kg	7,50	7,20

Statistics	DKK / Kg	
	Week 21, 2016	Week 21, 2015
Killings - Danish Crown	290.263	293.213
Hereof sows	6.125	6.793
Average weight	86,27	85,77
Weight interval 50,0 -	3,73%	3,41%
Weight interval 70,0 -	92,70%	93,27%
Weight interval 92,0 -	3,57%	3,32%
Average meat contents	60,68	60,48
Average price before production levy:		
Per kg / dressed (DKK)	9,35	9,60
Per hog / dressed (DKK)	806	823



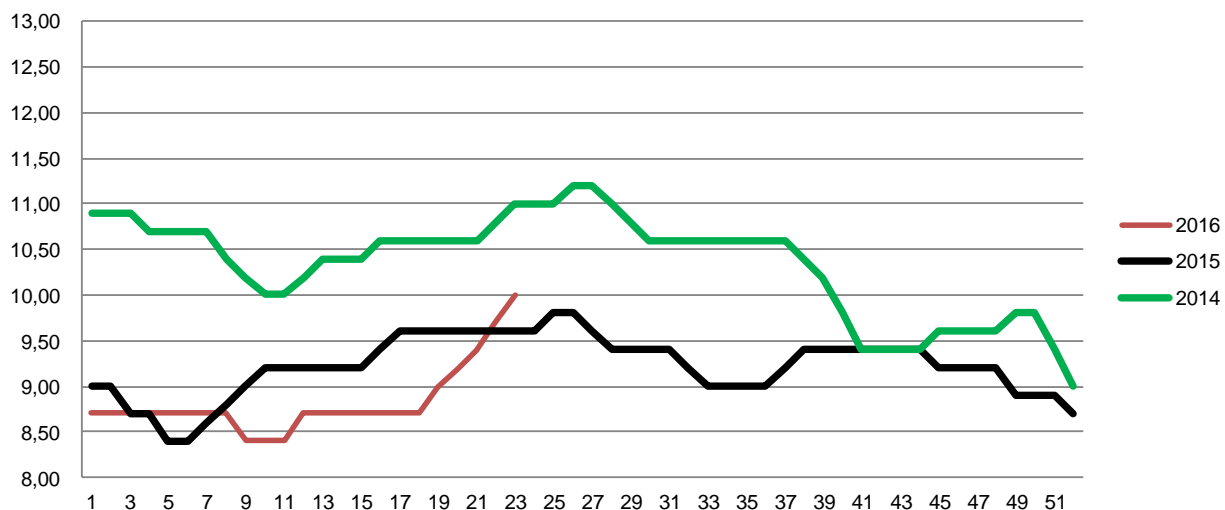
Best regards
Danish Crown



Weekly pig price – Danish Crown

Week	2016	2015	2014
1	8,70	9,00	10,90
2	8,70	9,00	10,90
3	8,70	8,70	10,90
4	8,70	8,70	10,70
5	8,70	8,40	10,70
6	8,70	8,40	10,70
7	8,70	8,60	10,70
8	8,70	8,80	10,40
9	8,40	9,00	10,20
10	8,40	9,20	10,00
11	8,40	9,20	10,00
12	8,70	9,20	10,20
13	8,70	9,20	10,40
14	8,70	9,20	10,40
15	8,70	9,20	10,40
16	8,70	9,40	10,60
17	8,70	9,60	10,60
18	8,70	9,60	10,60
19	9,00	9,60	10,60
20	9,20	9,60	10,60
21	9,40	9,60	10,60
22	9,70	9,60	10,80
23	10,00	9,60	11,00
24		9,60	11,00
25		9,80	11,00
26		9,80	11,20

Week	2016	2015	2014
27		9,60	11,20
28		9,40	11,00
29		9,40	10,80
30		9,40	10,60
31		9,40	10,60
32		9,20	10,60
33		9,00	10,60
34		9,00	10,60
35		9,00	10,60
36		9,00	10,60
37		9,20	10,60
38		9,40	10,40
39		9,40	10,20
40		9,40	9,80
41		9,40	9,40
42		9,40	9,40
43		9,40	9,40
44		9,40	9,40
45		9,20	9,60
46		9,20	9,60
47		9,20	9,60
48		9,20	9,60
49		8,90	9,80
50		8,90	9,80
51		8,90	9,40
52		8,70	9,00
Average (week)	8,83	9,22	10,35



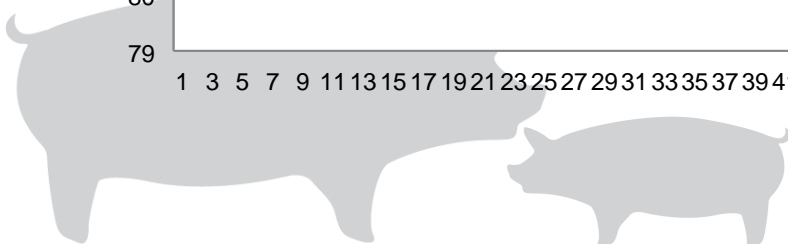
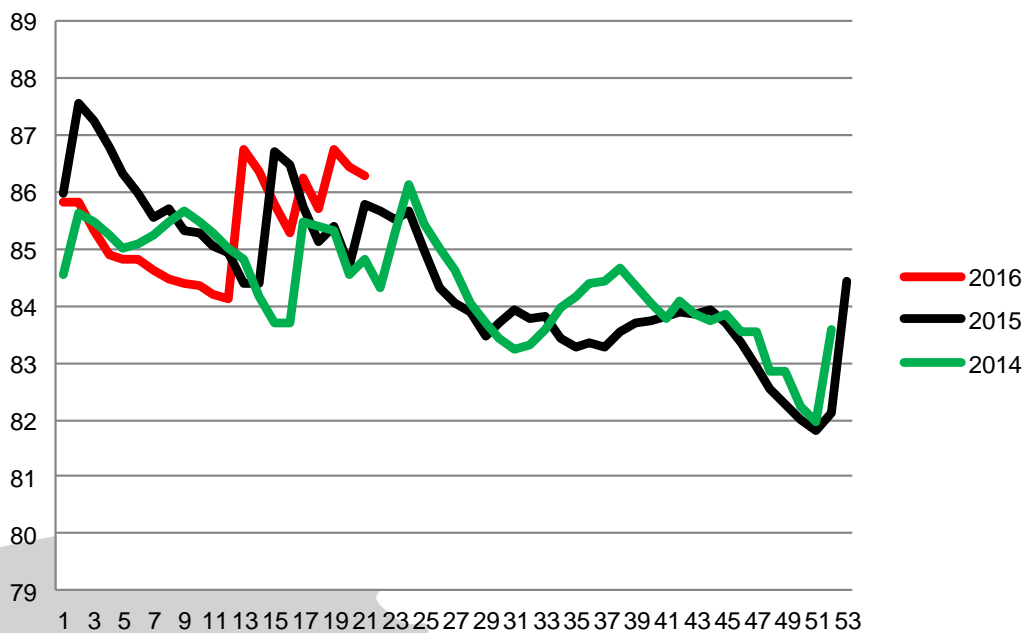
Best regards
Danish Crown



Average weight, Danish Crown (dressed) kg

Week	2016	2015	2014
1	85,81	85,98	84,55
2	85,84	87,57	85,63
3	85,32	87,26	85,49
4	84,90	86,79	85,26
5	84,80	86,31	85,03
6	84,83	85,96	85,08
7	84,61	85,55	85,25
8	84,46	85,69	85,46
9	84,41	85,32	85,68
10	84,34	85,29	85,48
11	84,19	85,05	85,27
12	84,13	84,94	85,02
13	86,75	84,41	84,80
14	86,38	84,41	84,18
15	85,77	86,72	83,71
16	85,28	86,49	83,70
17	86,26	85,73	85,47
18	85,69	85,13	85,38
19	86,76	85,39	85,31
20	86,44	84,72	84,56
21	86,27	85,77	84,80
22		85,68	84,31
23		85,51	85,33
24		85,66	86,12
25		84,98	85,45
26		84,30	85,00

Week	2016	2015	2014
27		84,04	84,64
28		83,89	84,03
29		83,47	83,69
30		83,71	83,43
31		83,94	83,22
32		83,77	83,33
33		83,80	83,57
34		83,44	83,97
35		83,29	84,18
36		83,34	84,41
37		83,26	84,45
38		83,53	84,65
39		83,69	84,37
40		83,74	84,03
41		83,82	83,78
42		83,89	84,10
43		83,84	83,85
44		83,92	83,74
45		83,71	83,84
46		83,35	83,54
47		82,93	83,54
48		82,54	82,85
49		82,27	82,86
50		82,00	82,22
51		81,81	81,97
52		82,13	83,59
53		84,43	
Average (week)		84,49	84,37
Change (week)		0,15%	2,16%



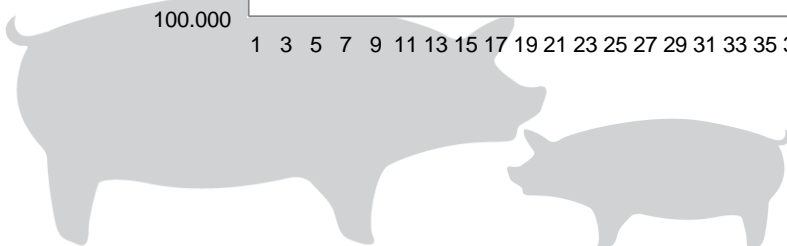
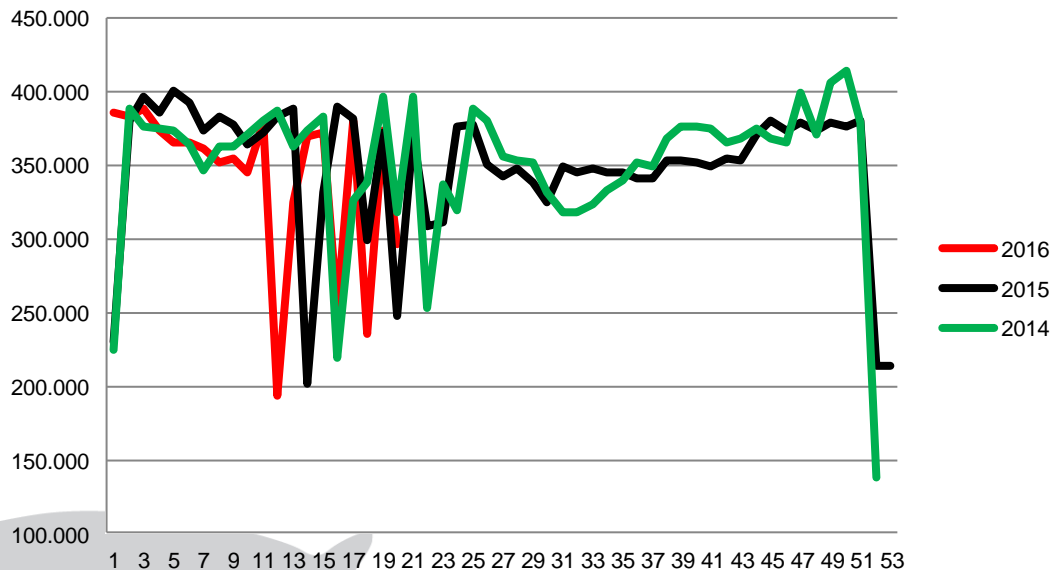
Best regards
Danish Crown



Total killings Denmark (98 % of all slaughtering's)

Week	2016	2015	2014
1	385.797	229.696	225.021
2	383.047	381.074	388.283
3	388.343	396.436	375.944
4	374.324	386.516	374.727
5	364.970	400.526	374.031
6	365.467	392.058	364.321
7	361.117	374.154	346.016
8	351.555	382.955	362.164
9	354.974	377.658	362.682
10	344.868	363.533	371.605
11	379.319	371.898	380.669
12	194.070	382.753	387.141
13	325.218	388.293	362.889
14	369.446	201.403	373.117
15	372.017	331.081	383.169
16	253.752	390.229	219.183
17	380.456	381.499	326.008
18	235.445	299.820	338.071
19	373.955	372.029	396.501
20	296.852	247.949	318.078
21		371.320	396.338
22		308.817	253.122
23		310.785	337.138
24		376.431	318.893
25		377.649	388.898
26		350.258	380.748

Week	2016	2015	2014
27		342.545	356.503
28		348.323	353.806
29		338.607	352.233
30		325.378	332.099
31		349.050	317.876
32		345.000	318.668
33		347.860	323.552
34		345.284	333.185
35		345.856	340.034
36		341.651	352.062
37		341.372	348.664
38		354.011	368.494
39		353.679	376.946
40		352.539	376.297
41		349.023	374.505
42		355.194	364.912
43		353.428	368.832
44		370.453	374.565
45		381.122	368.182
46		374.076	366.168
47		379.225	399.296
48		373.294	371.471
49		378.861	406.665
50		376.079	413.966
51		380.302	378.561
52		214.345	137.802
53		214.290	
Average (week)		348.635	351.540
Total (year)		18.263.377	18.280.101



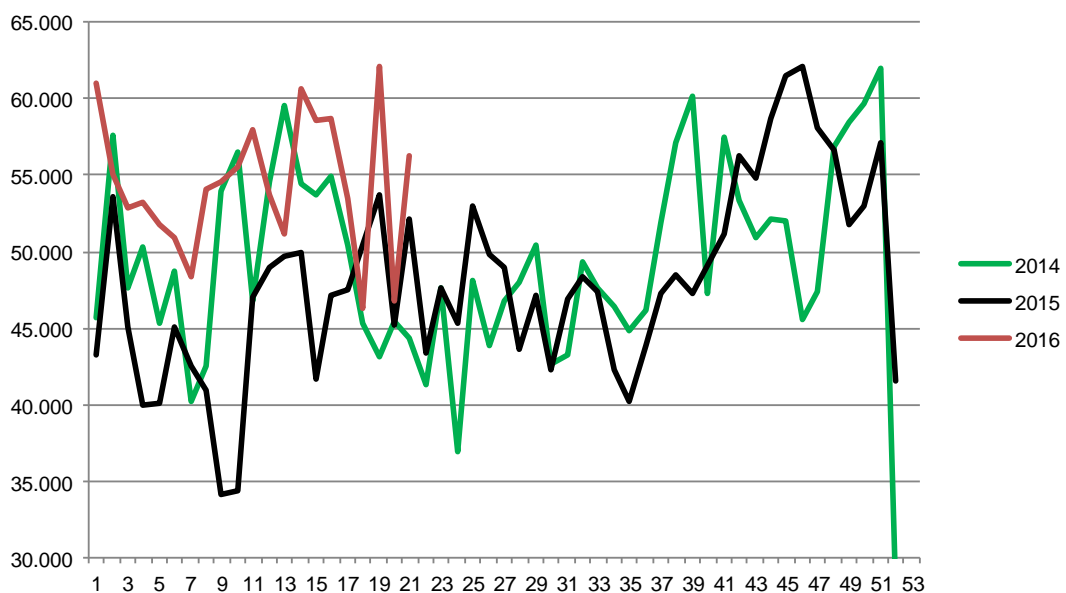
Best regards
Danish Crown



Weekly slaughtering's Danish Crown Essen

Week	2016	2015	2014
1	61.008	43.195	45.700
2	55.082	53.638	57.627
3	52.807	45.020	47.587
4	53.237	39.931	50.291
5	51.815	40.117	45.320
6	50.912	45.104	48.727
7	48.411	42.472	40.239
8	54.099	40.946	42.546
9	54.564	34.166	53.908
10	55.520	34.377	56.509
11	57.931	47.055	46.723
12	53.690	48.978	54.549
13	51.129	49.673	59.533
14	60.589	49.904	54.443
15	58.608	41.702	53.755
16	58.646	47.150	54.869
17	53.508	47.488	50.487
18	46.260	50.416	45.280
19	62.129	53.759	43.100
20	46.814	45.179	45.389
21	56.222	52.159	44.297
22		43.422	41.285
23		47.593	47.598
24		45.265	36.922
25		52.956	48.136
26		49.840	43.921

Week	2015	2014
27	48.928	46.759
28	43.582	47.950
29	47.141	50.452
30	42.317	42.692
31	46.882	43.203
32	48.324	49.375
33	47.392	47.650
34	42.320	46.411
35	40.239	44.796
36	43.894	46.174
37	47.298	51.838
38	48.522	57.162
39	47.249	60.108
40	49.104	47.249
41	51.140	57.511
42	56.284	53.302
43	54.756	50.854
44	58.676	52.169
45	61.458	52.053
46	62.096	45.584
47	58.136	47.440
48	56.648	56.897
49	51.792	58.440
50	53.040	59.646
51	57.128	61.950
52	41.578	27.955
53	50.466	
Average (week)	54.428	49.315
Total (year)	1.142.981	2.564.361



Best regaras
Danish Crown



Development in the quarterly production in Denmark and forecast for the next three quarters

It is still expected that we will see a small decrease in the Danish production of piglets in 2016. At the same time the export of live piglets is still increasing and therefore we expect the total number of Danish slaughtering's to decrease in 2016

Pieces	Slaughterings	Export	Export	Total
	Total	Pigs/sows	Piglets	
1. quarter 09	5.179.451	344.490	1.677.899	7.201.840
2. quarter 09	4.466.157	321.420	1.846.203	6.633.780
3. quarter 09	4.773.275	309.342	1.754.251	6.836.868
4. quarter 09	4.869.708	274.921	1.765.367	6.909.996
Total year 2009	19.288.591	1.250.173	7.043.720	27.582.484
1. quarter 10	5.180.709	322.635	1.802.296	7.305.640
2. quarter 10	4.816.163	235.427	1.967.967	7.019.557
3. quarter 10	5.093.504	160.951	1.846.083	7.100.538
4. quarter 10	5.153.620	177.178	1.898.701	7.229.499
Total year 2010	20.243.996	896.191	7.515.047	28.655.234
1. quarter 11	5.570.788	162.914	2.000.223	7.733.925
2. quarter 11	4.891.767	140.887	1.942.520	6.975.174
3. quarter 11	5.159.361	94.775	2.043.918	7.298.054
4. quarter 11	5.304.009	101.819	2.052.450	7.458.278
Total year 2011	20.925.925	500.395	8.039.111	29.465.431
1. quarter 12	5.216.720	111.949	2.275.286	7.603.955
2. quarter 12	4.561.569	116.947	2.342.747	7.021.263
3. quarter 12	4.770.129	118.457	2.329.310	7.217.896
4. quarter 12	4.887.537	106.229	2.293.833	7.287.599
Total year 2012	19.435.955	453.582	9.241.176	29.130.713
1. quarter 13	4.826.320	100.617	2.321.779	7.248.716
2. quarter 13	4.741.941	118.708	2.494.446	7.355.095
3. quarter 13	4.649.043	106.986	2.426.606	7.182.635
4. quarter 13	4.857.001	97.696	2.463.702	7.418.399
Total year 2013	19.074.305	424.007	9.706.533	29.204.845
1. quarter 14	4.824.338	103.424	2.577.680	7.505.442
2. quarter 14	4.552.804	108.156	2.755.068	7.416.028
3. quarter 14	4.609.841	90.848	2.755.191	7.455.880
4. quarter 14	4.835.460	97.370	2.791.393	7.724.223
Total year 2014	18.822.443	399.798	10.879.332	30.101.573
1. quarter 15	4.966.959	104.168	2.935.943	8.007.070
2. quarter 15	4.424.355	83.831	2.992.026	7.500.212
3. quarter 15	4.604.994	79.003	3.030.591	7.714.588
4. quarter 15	4.993.427*	71.770	3.016.489	8.081.686
Total year 2015	18.989.735	338.772	11.975.049	31.303.556
1. quarter 16	4.694.502	70.386	3.276.103	8.040.991
2. quarter 16	-4.435.000	-75.000	-3.245.000	-7.755.000
3. quarter 16	-4.410.000	-75.000	-3.220.000	-7.705.000
4. quarter 16	-4.390.000	-75.000	-3.270.000	-7.735.000
Total year 2016	-17.929.502	-295.386	-13.011.103	-31.235.991
1. quarter 17	-4.320.000	-75.000	-3.345.000	-7.740.000
2. quarter 17				
3. quarter 17				
4. quarter 17				
Total year 2017				

Best regards
Danish Crown



Strike at Danish Crown Slaughterhouse in Horsens

Since Monday morning, Danish Crown's biggest slaughterhouse in Horsens has been hit by an unofficial strike. A small group of employees from among the 1,300 slaughterhouse workers are unhappy with the introduction of new piecework rates and have therefore decided to down their tools. The rest of the slaughterhouse workers have decided to stop work in sympathy, and no animals have therefore been slaughtered in Horsens since Monday morning.

On a normal day, about 20,000 pigs are slaughtered at Danish Crown's facility in Horsens, and at the moment many of our customers are therefore not receiving the quantities which they have ordered.

Latest news is that they have started to work again Thursday morning and we hope the production will soon be normalised again, but until that happens, we are regrettably unable to avoid irregularities in deliveries to our customers.



Best regards
Danish Crown

