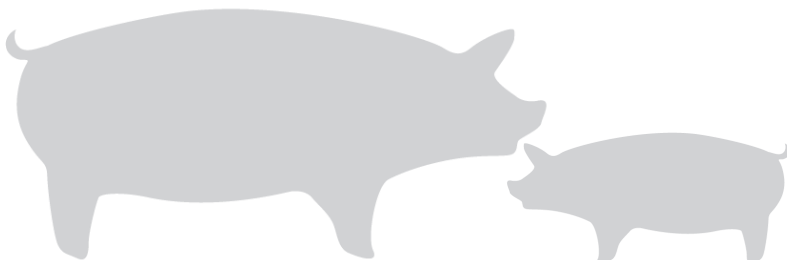


Live hog prices dressed weight

Weight interval	DKK / Kg	
	17.10.2016 – 23.10.2016 (Week 42)	10.10.2016 – 16.10.2016 (Week 41)
	50,0 - 59,9 Kg	6,20 - 7,20
60,0 - 69,9 Kg	8,20 - 10,05	8,40 - 10,25
70,0 - 94,9 Kg	10,20	10,40
95,0 - 95,9 Kg	10,00	10,20
96,0 - 96,9 Kg	9,60	9,80
97,0 - 97,9 Kg	9,30	9,50
98,0 - 99,9 Kg	9,00	9,20
100,0 - 109,9 Kg	7,70	7,90

Statistics	DKK / Kg	
	Week 40, 2016	Week 40, 2015
Killings - Danish Crown	260.486	275.705
Hereof sows	5.245	6.175
Average weight	85,47	83,74
Weight interval 50,0 -	3,99%	4,55%
Weight interval 70,0 -	91,17%	91,68%
Weight interval 92,0 -	4,84%	3,77%
Average meat contents	60,52	60,43
Per kg / dressed (DKK)	10,67	9,45
Per hog / dressed (DKK)	912	791



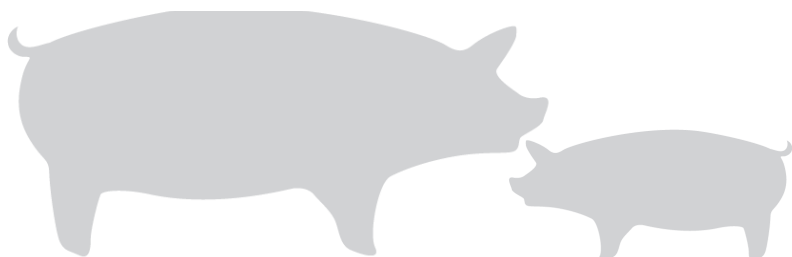
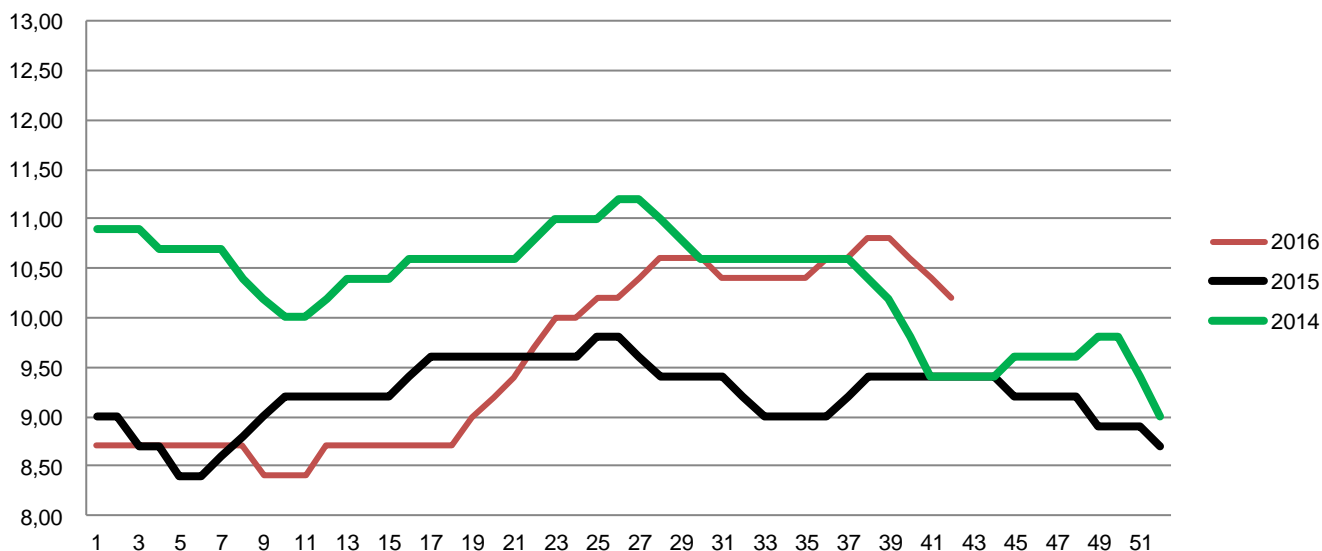
Best regards
Danish Crown



Weekly pig price – Danish Crown

Week	2016	2015	2014
1	8,70	9,00	10,90
2	8,70	9,00	10,90
3	8,70	8,70	10,90
4	8,70	8,70	10,70
5	8,70	8,40	10,70
6	8,70	8,40	10,70
7	8,70	8,60	10,70
8	8,70	8,80	10,40
9	8,40	9,00	10,20
10	8,40	9,20	10,00
11	8,40	9,20	10,00
12	8,70	9,20	10,20
13	8,70	9,20	10,40
14	8,70	9,20	10,40
15	8,70	9,20	10,40
16	8,70	9,40	10,60
17	8,70	9,60	10,60
18	8,70	9,60	10,60
19	9,00	9,60	10,60
20	9,20	9,60	10,60
21	9,40	9,60	10,60
22	9,70	9,60	10,80
23	10,00	9,60	11,00
24	10,00	9,60	11,00
25	10,20	9,80	11,00
26	10,20	9,80	11,20

Week	2016	2015	2014
27	10,40	9,60	11,20
28	10,60	9,40	11,00
29	10,60	9,40	10,80
30	10,60	9,40	10,60
31	10,40	9,40	10,60
32	10,40	9,20	10,60
33	10,40	9,00	10,60
34	10,40	9,00	10,60
35	10,40	9,00	10,60
36	10,60	9,00	10,60
37	10,60	9,20	10,60
38	10,80	9,40	10,40
39	10,80	9,40	10,20
40	10,60	9,40	9,80
41	10,40	9,40	9,40
42	10,20	9,40	9,40
43		9,40	9,40
44		9,40	9,40
45		9,20	9,60
46		9,20	9,60
47		9,20	9,60
48		9,20	9,60
49		8,90	9,80
50		8,90	9,80
51		8,90	9,40
52		8,70	9,00
Average (week)	9,56	9,22	10,35



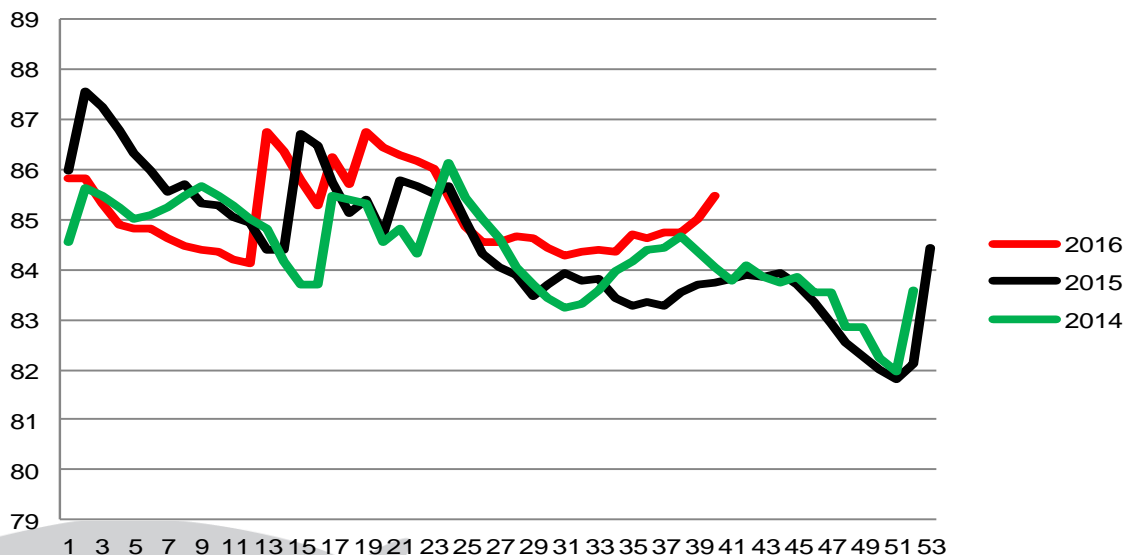
Best regards
Danish Crown



Average weight, Danish Crown (dressed) kg

Week	2016	2015	2014
1	85,81	85,98	84,55
2	85,84	87,57	85,63
3	85,32	87,26	85,49
4	84,90	86,79	85,26
5	84,80	86,31	85,03
6	84,83	85,96	85,08
7	84,61	85,55	85,25
8	84,46	85,69	85,46
9	84,41	85,32	85,68
10	84,34	85,29	85,48
11	84,19	85,05	85,27
12	84,13	84,94	85,02
13	86,75	84,41	84,80
14	86,38	84,41	84,18
15	85,77	86,72	83,71
16	85,28	86,49	83,70
17	86,26	85,73	85,47
18	85,69	85,13	85,38
19	86,76	85,39	85,31
20	86,44	84,72	84,56
21	86,27	85,77	84,80
22	86,16	85,68	84,31
23	86,03	85,51	85,33
24	85,49	85,66	86,12
25	84,85	84,98	85,45
26	84,54	84,30	85,00

Week	2016	2015	2014
27	84,53	84,04	84,64
28	84,65	83,89	84,03
29	84,63	83,47	83,69
30	84,43	83,71	83,43
31	84,27	83,94	83,22
32	84,36	83,77	83,33
33	84,41	83,80	83,57
34	84,37	83,44	83,97
35	84,69	83,29	84,18
36	84,62	83,34	84,41
37	84,74	83,26	84,45
38	84,75	83,53	84,65
39	85,00	83,69	84,37
40	85,47	83,74	84,03
41		83,82	83,78
42		83,89	84,10
43		83,84	83,85
44		83,92	83,74
45		83,71	83,84
46		83,35	83,54
47		82,93	83,54
48		82,54	82,85
49		82,27	82,86
50		82,00	82,22
51		81,81	81,97
52		82,13	83,59
53		84,43	
Average (week)		84,49	84,37
Change (week)		0,15%	2,16%



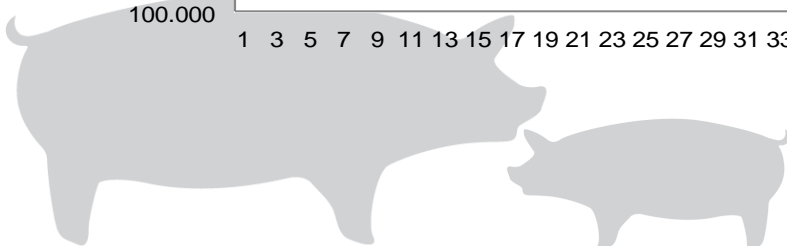
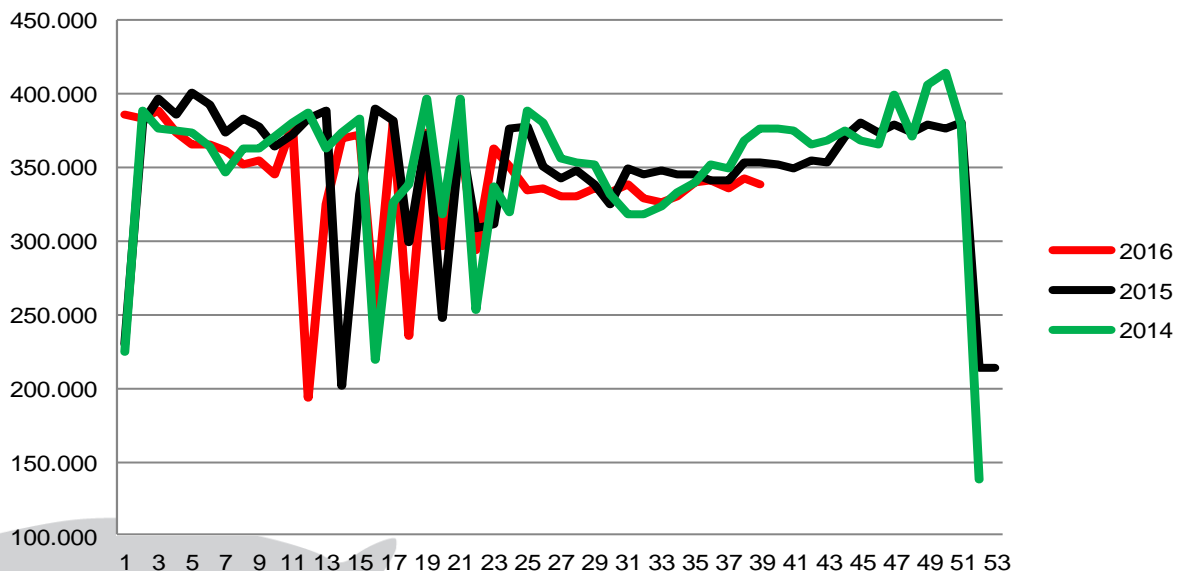
Best regards
Danish Crown



Total killings Denmark (98 % of all slaughtering's)

Week	2016	2015	2014
1	385.797	229.696	225.021
2	383.047	381.074	388.283
3	388.343	396.436	375.944
4	374.324	386.516	374.727
5	364.970	400.526	374.031
6	365.467	392.058	364.321
7	361.117	374.154	346.016
8	351.555	382.955	362.164
9	354.974	377.658	362.682
10	344.868	363.533	371.605
11	379.319	371.898	380.669
12	194.070	382.753	387.141
13	325.218	388.293	362.889
14	369.446	201.403	373.117
15	372.017	331.081	383.169
16	253.752	390.229	219.183
17	380.456	381.499	326.008
18	235.445	299.820	338.071
19	373.955	372.029	396.501
20	296.852	247.949	318.078
21	368.802	371.320	396.338
22	293.366	308.817	253.122
23	363.254	310.785	337.138
24	351.266	376.431	318.893
25	334.945	377.649	388.898
26	335.984	350.258	380.748

Week	2016	2015	2014
27	330.564	342.545	356.503
28	330.712	348.323	353.806
29	335.694	338.607	352.233
30	333.626	325.378	332.099
31	338.528	349.050	317.876
32	328.402	345.000	318.668
33	325.905	347.860	323.552
34	330.131	345.284	333.185
35	340.115	345.856	340.034
36	340.573	341.651	352.062
37	335.916	341.372	348.664
38	342.188	354.011	368.494
39	338.515	353.679	376.946
40		352.539	376.297
41		349.023	374.505
42		355.194	364.912
43		353.428	368.832
44		370.453	374.565
45		381.122	368.182
46		374.076	366.168
47		379.225	399.296
48		373.294	371.471
49		378.861	406.665
50		376.079	413.966
51		380.302	378.561
52		214.345	137.802
53		214.290	
Average (week)		348.635	351.540
Total (year)		18.263.377	18.280.101
Change (week)		-0,83%	-1,32%



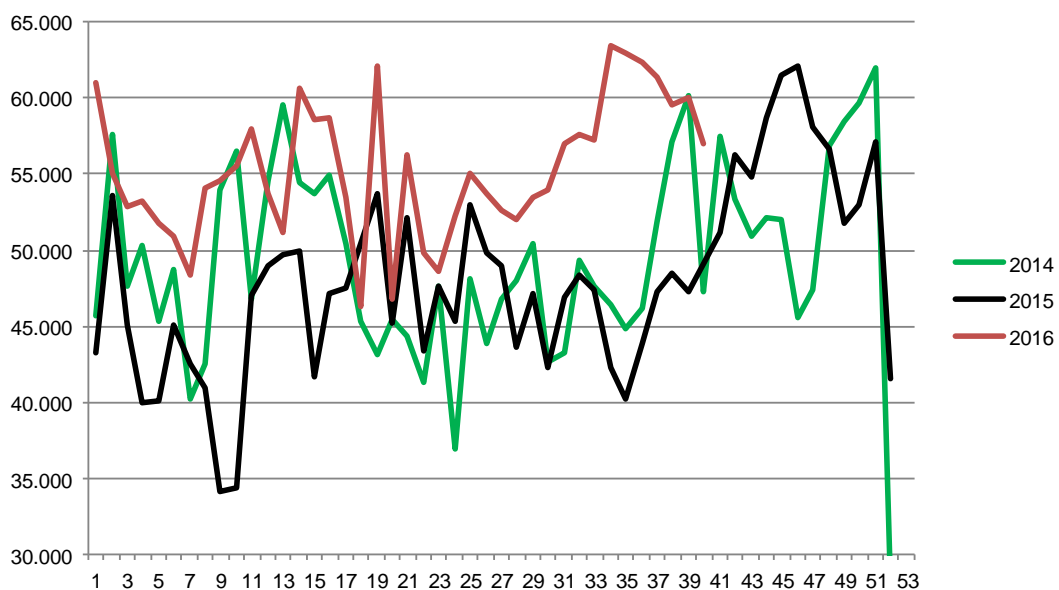
Best regards
Danish Crown



Weekly slaughtering's Danish Crown Essen

Week	2016	2015	2014
1	61.008	43.195	45.700
2	55.082	53.638	57.627
3	52.807	45.020	47.587
4	53.237	39.931	50.291
5	51.815	40.117	45.320
6	50.912	45.104	48.727
7	48.411	42.472	40.239
8	54.099	40.946	42.546
9	54.564	34.166	53.908
10	55.520	34.377	56.509
11	57.931	47.055	46.723
12	53.690	48.978	54.549
13	51.129	49.673	59.533
14	60.589	49.904	54.443
15	58.608	41.702	53.755
16	58.646	47.150	54.869
17	53.508	47.488	50.487
18	46.260	50.416	45.280
19	62.129	53.759	43.100
20	46.814	45.179	45.389
21	56.222	52.159	44.297
22	49.798	43.422	41.285
23	48.579	47.593	47.598
24	52.277	45.265	36.922
25	55.088	52.956	48.136
26	53.747	49.840	43.921

Week	2016	2015	2014
27	52.567	48.928	46.759
28	51.977	43.582	47.950
29	53.498	47.141	50.452
30	54.009	42.317	42.692
31	57.008	46.882	43.203
32	57.569	48.324	49.375
33	57.230	47.392	47.650
34	63.500	42.320	46.411
35	62.909	40.239	44.796
36	62.374	43.894	46.174
37	61.328	47.298	51.838
38	59.540	48.522	57.162
39	60.082	47.249	60.108
40	57.049	49.104	47.249
41		51.140	57.511
42		56.284	53.302
43		54.756	50.854
44		58.676	52.169
45		61.458	52.053
46		62.096	45.584
47		58.136	47.440
48		56.648	56.897
49		51.792	58.440
50		53.040	59.646
51		57.128	61.950
52		41.578	27.955
53		50.466	
Average (week)	55.328	48.073	49.315
Total (year)	2.213.110	2.497.429	2.564.361
Change (week)	15,09%	-2,52%	-5,56%



Best regards
Danish Crown



Pork consumption world wide (selected countries)

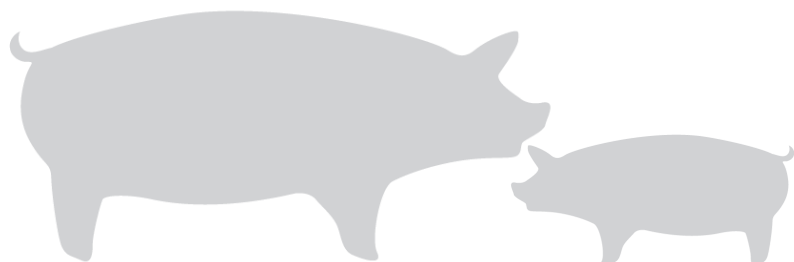
Production 1.000 tons	2012	2013	2014	2015	2016	Forecast 2017	Index 2017:2016
China	53.427	54.930	56.710	54.870	51.850	53.750	103,66
EU 27	22.526	22.359	22.540	23.290	23.350	23.350	100,00
USA	10.554	10.525	10.368	11.121	11.307	11.739	103,82
Brazil	3.330	3.335	3.400	3.519	3.710	3.825	103,10
Russia	2.175	2.400	2.510	2.615	2.770	2.900	104,69
Vietnam	2.307	2.349	2.425	2.475	2.525	2.575	101,98
Canada	1.844	1.822	1.805	1.899	1.975	1.980	100,25
The Philippines	1.310	1.340	1.353	1.370	1.440	1.500	104,17
Japan	1.297	1.309	1.264	1.254	1.275	1.265	99,22
Mexico	1.239	1.284	1.290	1.323	1.385	1.448	104,55
South Korea	1.086	1.252	1.200	1.217	1.232	1.263	102,52
Others	5.778	5.923	5.701	5.423	5.382	5.416	100,63
Total	106.873	108.828	110.566	110.376	108.201	111.011	102,60

Source : USDA

Pork production world wide (selected countries)

Consumption 1.000 tons	2012	2013	2014	2015	2016	Forecast 2017	Index 2017:2016
China	53.922	55.456	57.195	55.668	54.070	55.870	103,33
EU 27	20.382	20.147	20.390	20.913	20.062	20.062	100,00
USA	8.441	8.665	8.545	9.341	9.452	9.811	103,80
Russia	3.239	3.267	3.024	3.016	3.160	3.280	103,80
Brazil	2.670	2.751	2.845	2.893	2.811	2.886	102,67
Japan	2.557	2.549	2.543	2.568	2.590	2.585	99,81
Vietnam	2.279	2.333	2.408	2.456	2.506	2.556	102,00
Mexico	1.850	1.956	1.991	2.176	2.270	2.348	103,44
South Korea	1.546	1.628	1.660	1.813	1.868	1.890	101,18
The Philippines	1.446	1.511	1.551	1.544	1.659	1.750	105,49
Taiwan	906	892	875	930	897	897	100,00
Others	7.152	7.277	6.869	6.587	6.656	6.755	101,49
Total	106.390	108.432	109.896	109.905	108.001	110.690	102,49

Source : USDA



Best regards
Danish Crown

