

## Live hog prices dressed weight

Weight interval	DKK / Kg	
	18.01.2016 – 24.01.2016	11.01.2016 – 17.01.2016
	(Week 03)	(Week 02)
50,0 - 59,9 Kg	4,70 - 5,70	4,70 - 5,70
60,0 - 69,9 Kg	6,70 - 8,55	6,70 - 8,55
<b>70,0 - 94,9 Kg</b>	<b>8,70</b>	<b>8,70</b>
95,0 - 95,9 Kg	8,50	8,50
96,0 - 96,9 Kg	8,10	8,10
97,0 - 97,9 Kg	7,80	7,80
98,0 - 99,9 Kg	7,50	7,50
100,0 - 109,9 Kg	6,20	6,20

Statistics	DKK / Kg	
	Week 01, 2015	Week 01, 2014
Killings - Danish Crown	297.982	172.145
Hereof sows	6.901	3.768
Average weight	85,81	85,98
Weight interval 50,0 -	3,24%	3,27%
Weight interval 70,0 -	93,20%	90,09%
Weight interval 92,0 -	3,56%	6,64%
Average meat contents	60,15	59,92
<b>Average price before production levy:</b>		
Per kg / dressed (DKK)	8,70	8,95
Per hog / dressed (DKK)	789	770



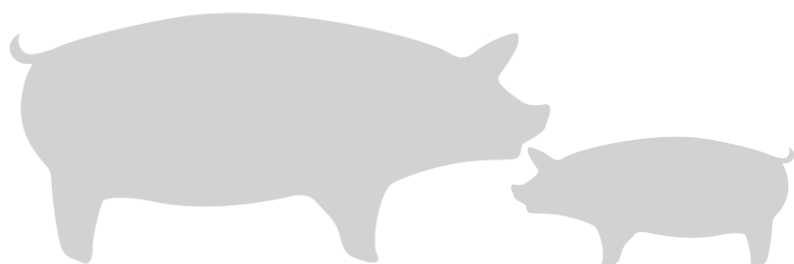
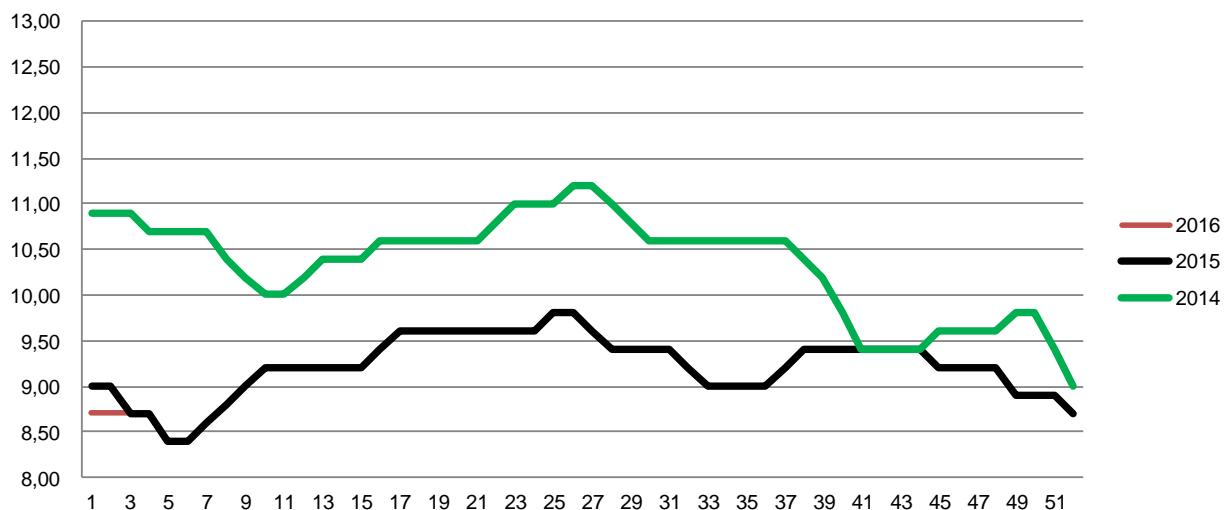
Best regards  
Danish Crown



## Weekly pig price - DC

Week	2016	2015	2014
1	8,70	9,00	10,90
2	8,70	9,00	10,90
3	8,70	8,70	10,90
4		8,70	10,70
5		8,40	10,70
6		8,40	10,70
7		8,60	10,70
8		8,80	10,40
9		9,00	10,20
10		9,20	10,00
11		9,20	10,00
12		9,20	10,20
13		9,20	10,40
14		9,20	10,40
15		9,20	10,40
16		9,40	10,60
17		9,60	10,60
18		9,60	10,60
19		9,60	10,60
20		9,60	10,60
21		9,60	10,60
22		9,60	10,80
23		9,60	11,00
24		9,60	11,00
25		9,80	11,00
26		9,80	11,20

Week	2016	2015	2014
27		9,60	11,20
28		9,40	11,00
29		9,40	10,80
30		9,40	10,60
31		9,40	10,60
32		9,20	10,60
33		9,00	10,60
34		9,00	10,60
35		9,00	10,60
36		9,00	10,60
37		9,20	10,60
38		9,40	10,40
39		9,40	10,20
40		9,40	9,80
41		9,40	9,40
42		9,40	9,40
43		9,40	9,40
44		9,40	9,40
45		9,20	9,60
46		9,20	9,60
47		9,20	9,60
48		9,20	9,60
49		8,90	9,80
50		8,90	9,80
51		8,90	9,40
52		8,70	9,00
Average (week)	8,70	9,22	10,35



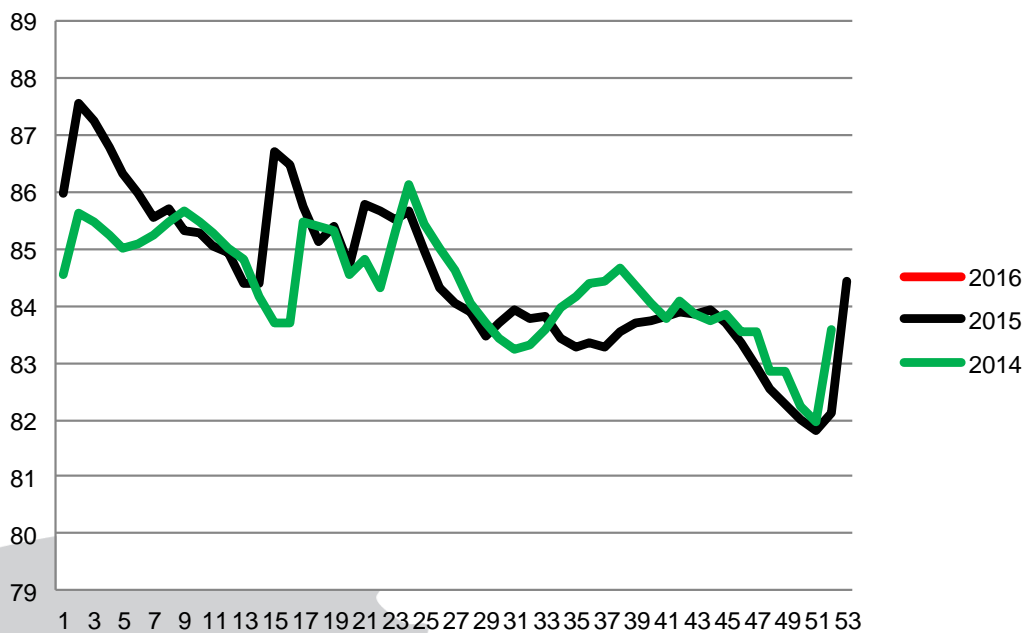
Best regards  
Danish Crown



## Average weight DC (dressed) kg

Week	2016	2015	2014
1		85,98	84,55
2		87,57	85,63
3		87,26	85,49
4		86,79	85,26
5		86,31	85,03
6		85,96	85,08
7		85,55	85,25
8		85,69	85,46
9		85,32	85,68
10		85,29	85,48
11		85,05	85,27
12		84,94	85,02
13		84,41	84,80
14		84,41	84,18
15		86,72	83,71
16		86,49	83,70
17		85,73	85,47
18		85,13	85,38
19		85,39	85,31
20		84,72	84,56
21		85,77	84,80
22		85,68	84,31
23		85,51	85,33
24		85,66	86,12
25		84,98	85,45
26		84,30	85,00

Week	2016	2015	2014
27		84,04	84,64
28		83,89	84,03
29		83,47	83,69
30		83,71	83,43
31		83,94	83,22
32		83,77	83,33
33		83,80	83,57
34		83,44	83,97
35		83,29	84,18
36		83,34	84,41
37		83,26	84,45
38		83,53	84,65
39		83,69	84,37
40		83,74	84,03
41		83,82	83,78
42		83,89	84,10
43		83,84	83,85
44		83,92	83,74
45		83,71	83,84
46		83,35	83,54
47		82,93	83,54
48		82,54	82,85
49		82,27	82,86
50		82,00	82,22
51		81,81	81,97
52		82,13	83,59
53		84,43	
Average (week)		84,49	84,37
Change (week)		0,15%	2,16%



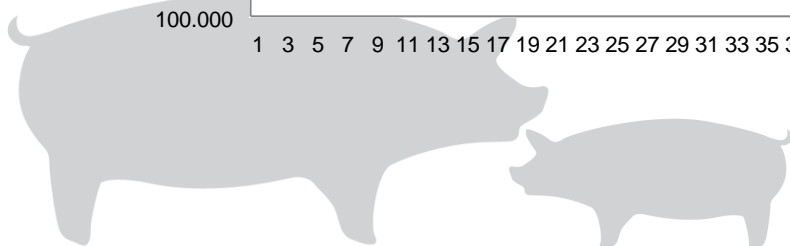
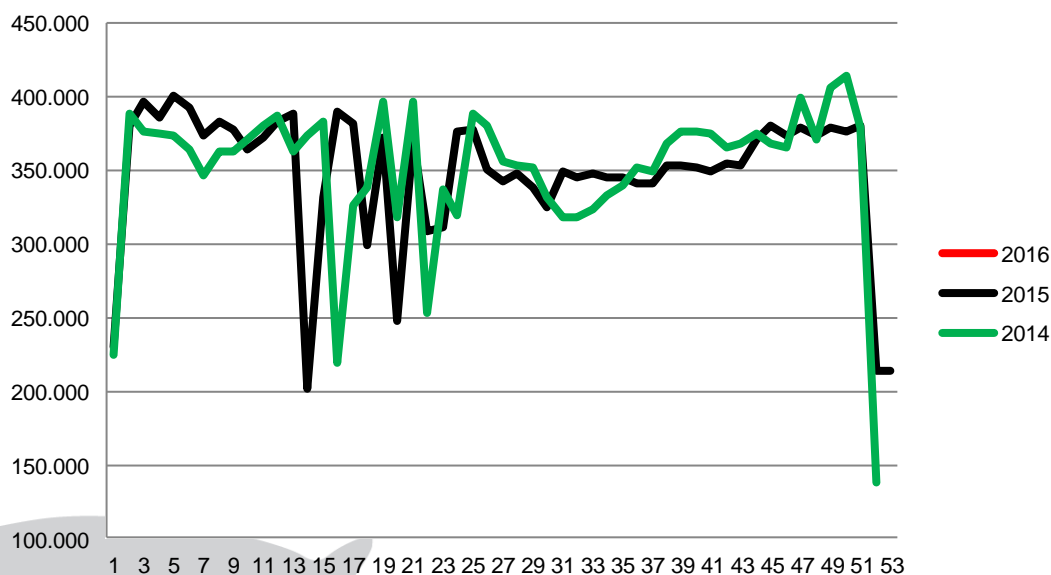
Best regards  
Danish Crown



## Total killings Denmark (98 % of all slaughtering's)

Week	2016	2015	2014
1		229.696	225.021
2		381.074	388.283
3		396.436	375.944
4		386.516	374.727
5		400.526	374.031
6		392.058	364.321
7		374.154	346.016
8		382.955	362.164
9		377.658	362.682
10		363.533	371.605
11		371.898	380.669
12		382.753	387.141
13		388.293	362.889
14		201.403	373.117
15		331.081	383.169
16		390.229	219.183
17		381.499	326.008
18		299.820	338.071
19		372.029	396.501
20		247.949	318.078
21		371.320	396.338
22		308.817	253.122
23		310.785	337.138
24		376.431	318.893
25		377.649	388.898
26		350.258	380.748

Week	2016	2015	2014
27		342.545	356.503
28		348.323	353.806
29		338.607	352.233
30		325.378	332.099
31		349.050	317.876
32		345.000	318.668
33		347.860	323.552
34		345.284	333.185
35		345.856	340.034
36		341.651	352.062
37		341.372	348.664
38		354.011	368.494
39		353.679	376.946
40		352.539	376.297
41		349.023	374.505
42		355.194	364.912
43		353.428	368.832
44		370.453	374.565
45		381.122	368.182
46		374.076	366.168
47		379.225	399.296
48		373.294	371.471
49		378.861	406.665
50		376.079	413.966
51		380.302	378.561
52		214.345	137.802
53		214.290	
Average (week)		348.635	351.540
Total (year)		18.263.377	18.280.101



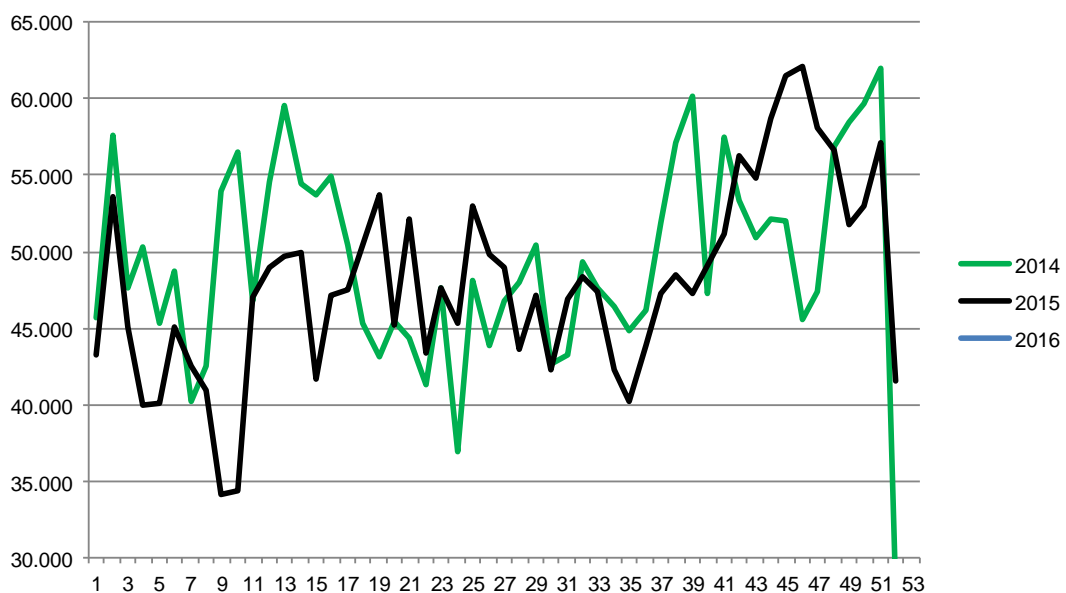
Best regards  
Danish Crown



## Weekly slaughtering's DC Essen

Week	2016	2015	2014
1	61.008	43.195	45.700
2		53.638	57.627
3		45.020	47.587
4		39.931	50.291
5		40.117	45.320
6		45.104	48.727
7		42.472	40.239
8		40.946	42.546
9		34.166	53.908
10		34.377	56.509
11		47.055	46.723
12		48.978	54.549
13		49.673	59.533
14		49.904	54.443
15		41.702	53.755
16		47.150	54.869
17		47.488	50.487
18		50.416	45.280
19		53.759	43.100
20		45.179	45.389
21		52.159	44.297
22		43.422	41.285
23		47.593	47.598
24		45.265	36.922
25		52.956	48.136
26		49.840	43.921

Week	2015	2014
27	48.928	46.759
28	43.582	47.950
29	47.141	50.452
30	42.317	42.692
31	46.882	43.203
32	48.324	49.375
33	47.392	47.650
34	42.320	46.411
35	40.239	44.796
36	43.894	46.174
37	47.298	51.838
38	48.522	57.162
39	47.249	60.108
40	49.104	47.249
41	51.140	57.511
42	56.284	53.302
43	54.756	50.854
44	58.676	52.169
45	61.458	52.053
46	62.096	45.584
47	58.136	47.440
48	56.648	56.897
49	51.792	58.440
50	53.040	59.646
51	57.128	61.950
52	41.578	27.955
53	50.466	
<b>Average (week)</b>	61.008	49.315
<b>Total (year)</b>	61.008	2.564.361



Best regards  
Danish Crown

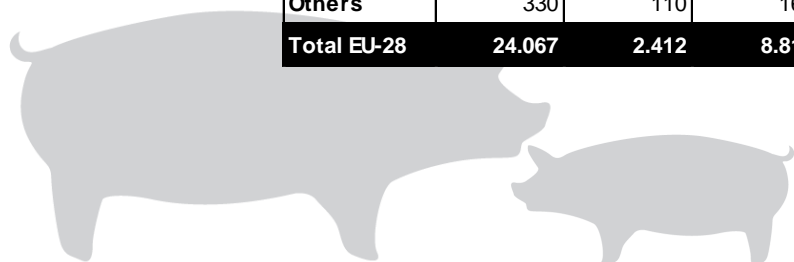


## Private storage (04/01-16 – 07/01-16)

The EU commission has calculated that in the first week with the possibility for private storage there have been applied for support to the storage of 35.290 tons of pork meat

Product code	Product	3 months	4 months	5 months	Total
2031110	Half carcasses	60	-	-	60
2031211	Legs	1.158	270	1.433	2.861
2031219	Shoulders	285	-	40	325
2031911	Forends	2.215	-	-	2.215
2031913	Loins	235	21	198	454
2031955	Legs, shoulders, forends and loins deboned	11.748	1.581	5.379	18.708
2031915	Bellies	1.958	-	137	2.095
2031955	Bellies deboned	1.801	310	984	3.095
2031955	Middles deboned	2.586	200	30	2.816
2091011	Fat	2.021	30	610	2.661
<b>Total</b>		<b>24.067</b>	<b>2.412</b>	<b>8.811</b>	<b>35.290</b>

Tons	3 months	4 months	5 months	Total	%-share
Spain	2.832	1.545	4.897	9.274	26,3
Germany	8.215	-	600	8.815	25
Denmark	5.607	-	300	5.907	16,7
Netherlands	4.587	295	663	5.545	15,6
Poland	350	21	1.082	1.453	4,1
France	565	178	258	1.001	2,8
Ireland	776	53	159	988	2,8
Belgium	332	170	100	602	1,7
Portugal	-	-	355	355	1
Finland	100	40	205	345	1
Cyprus	213	-	27	240	0,7
Estonia	160	-	-	160	0,5
Others	330	110	165	605	1,8
<b>Total EU-28</b>	<b>24.067</b>	<b>2.412</b>	<b>8.811</b>	<b>35.290</b>	<b>100</b>



Best regards  
Danish Crown

